

GIANT FLOWING BUBBLE



Exhibit w/o backdrop



Height: 12'-18'
(12' model shown)

Diameter: 6'

HOFFMAN DESIGN WORKS, INC.

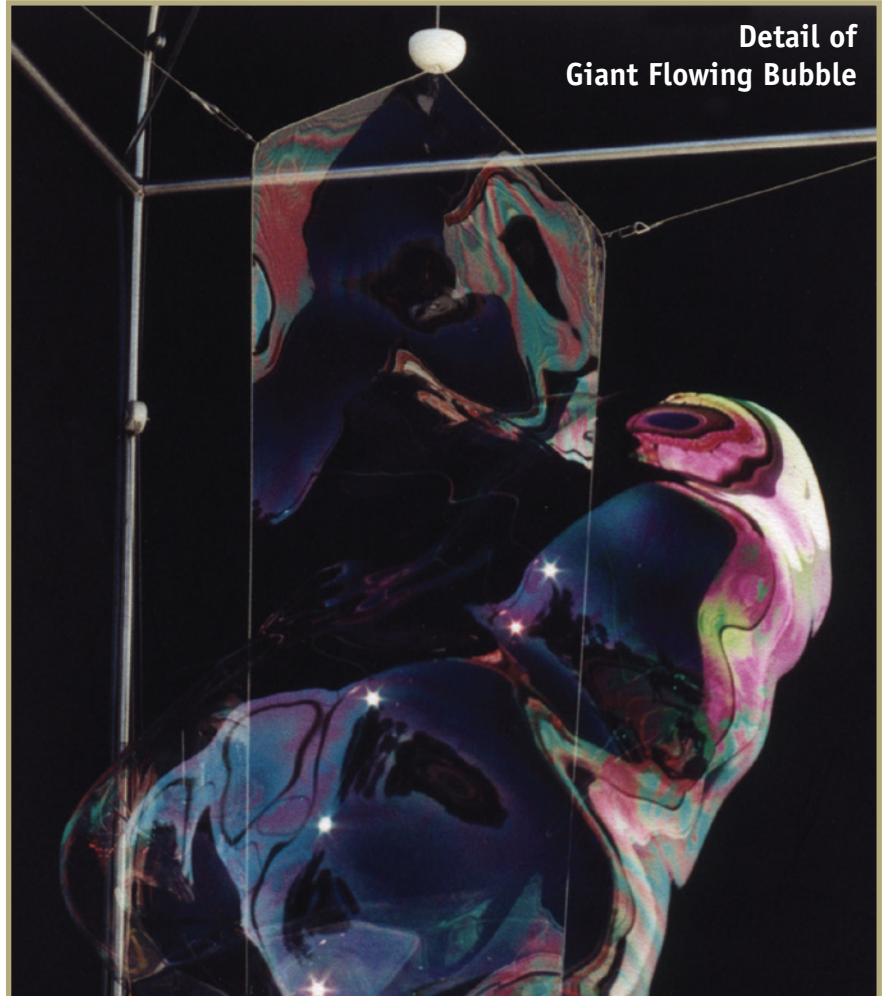
2126 N Industrial Dr.

Bloomington, IN 47404

(812) 334-3742

info@hoffmandesignworks.com

hoffmandesignworks.com



Detail of
Giant Flowing Bubble

FEATURES:

- Hand-crank spreads wires to create a flowing bubble film
- Button activates rear blower to create giant bubbles
- All stainless steel or powder-coated aluminum construction
- Hand-crank mechanism features a hydraulic damper to reduce shock/impact to wires
- Stainless steel funnel at base returns soap solution to reservoir
- Variable speed peristaltic pump to control soap solution flow
- Black vinyl backdrop
- Maintenance kit with spare wires, clips and pump hose
- This exhibit works best with a very simple bubble solution of water and Dawn dish detergent (no glycerin!)